



Mermaid Milly



Skill Level: Beginner

© 2014 Stephanie Friesen ❁ NOT FOR RESALE ❁ bluewhimsy.com

Materials:

1. Muslin - Head/body, arms
2. Felt - hair
3. Cotton - Bodyfront, back
4. Embroidery thread (black, flesh, pink)
5. Polyester fibrefill
6. Thread (various colours)

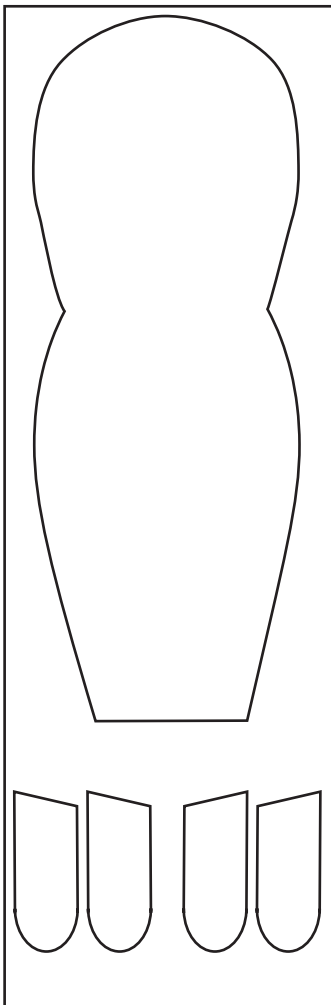
Tips & Hints:

- Prewash and iron all fabrics (except felt) at proper heat setting before cutting.
- Unless otherwise stated, all seam allowances are 1/4".
- Use pins when sewing together pieces, to ensure accurate alignment.
- Use Fray Check or a similar product to finish ribbon ends.

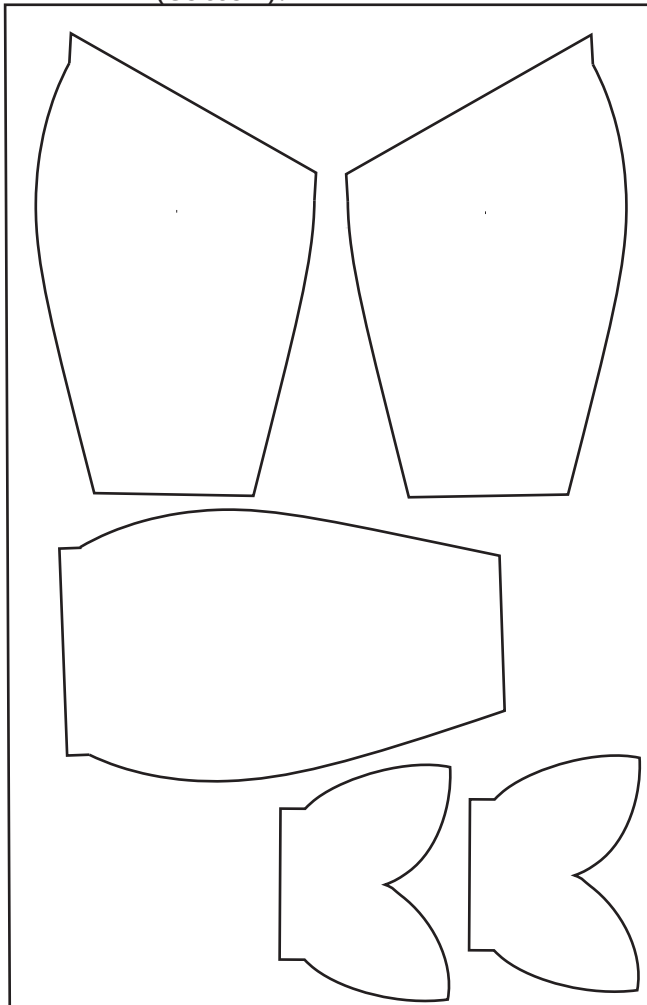
A. Pattern

Cut out pattern pieces.

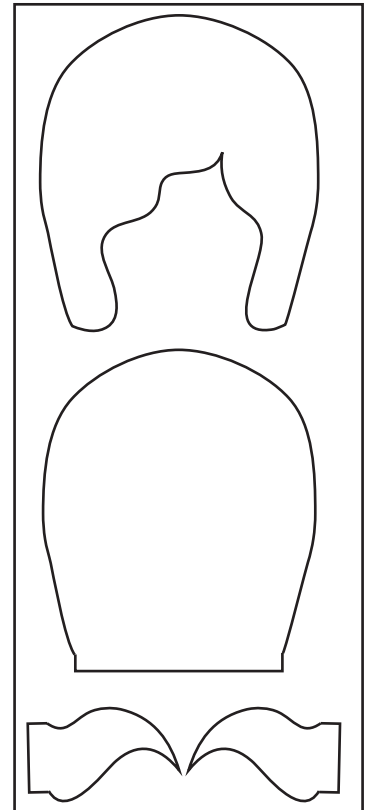
Body & arms (muslin):



Body front/back, tail fin
(cotton):

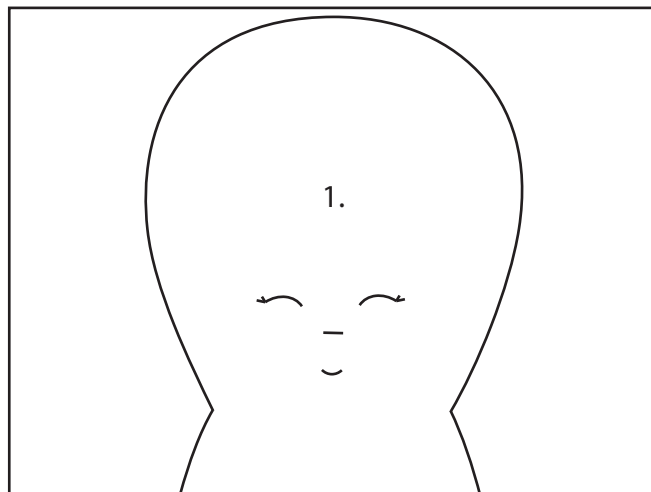
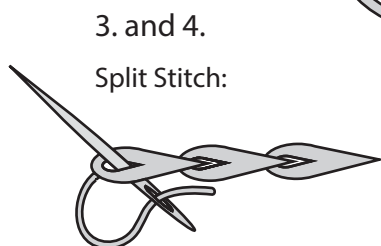
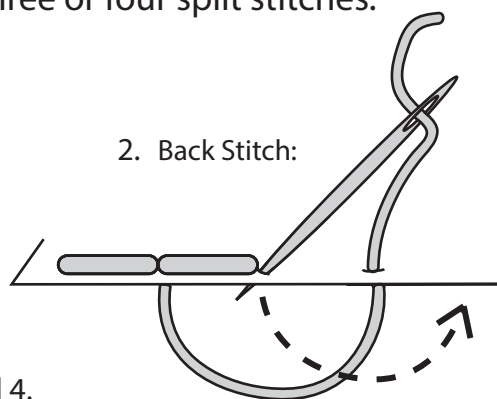


Hair (felt):



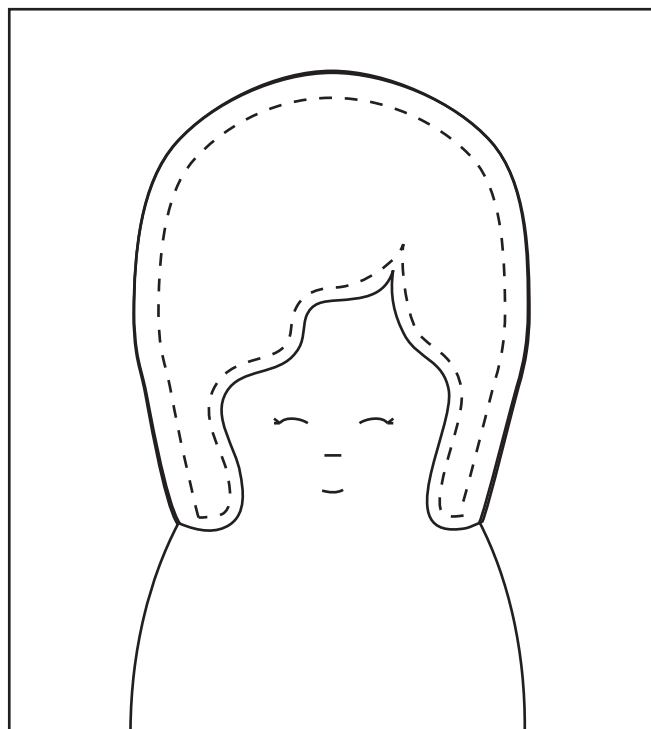
B. Embroider Face

1. Trace outline of face onto front head piece with a pencil.
2. Eyes and eyelashes - Use three strands of black embroidery thread and back stitches.
3. Nose - Use three strands of flesh-coloured embroidery thread and two split stitches.
4. Mouth - Use three strands of pink embroidery thread and three or four split stitches.



C: Hair

Using a matching or complimentary thread colour, sew the front hair piece to the right side of front head/body piece along the outside edge. Continue to sew very close to the edge of the felt along the hairline of the front, around the face, until you meet up with the beginning of your stitch line.



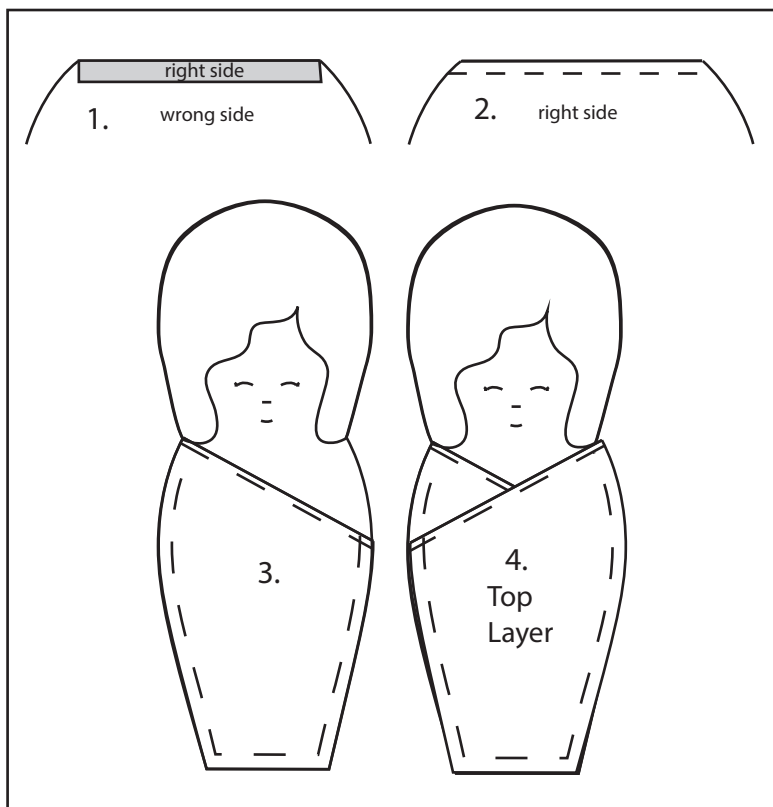
D. Body

1. Iron top edge of all three body pieces under, 1/4" from the edge.

2. Sew along the top edge of the Back Body piece to finish the edge. (Do not attach to the head/body yet!)

3. Sew one Front Body layer to the body along the top diagonal edge, then baste around the outside edge.

4. Sew the other Front Body layer to the body along the top diagonal edge, then baste around the outside edge.



E. Arms & Tail Fin

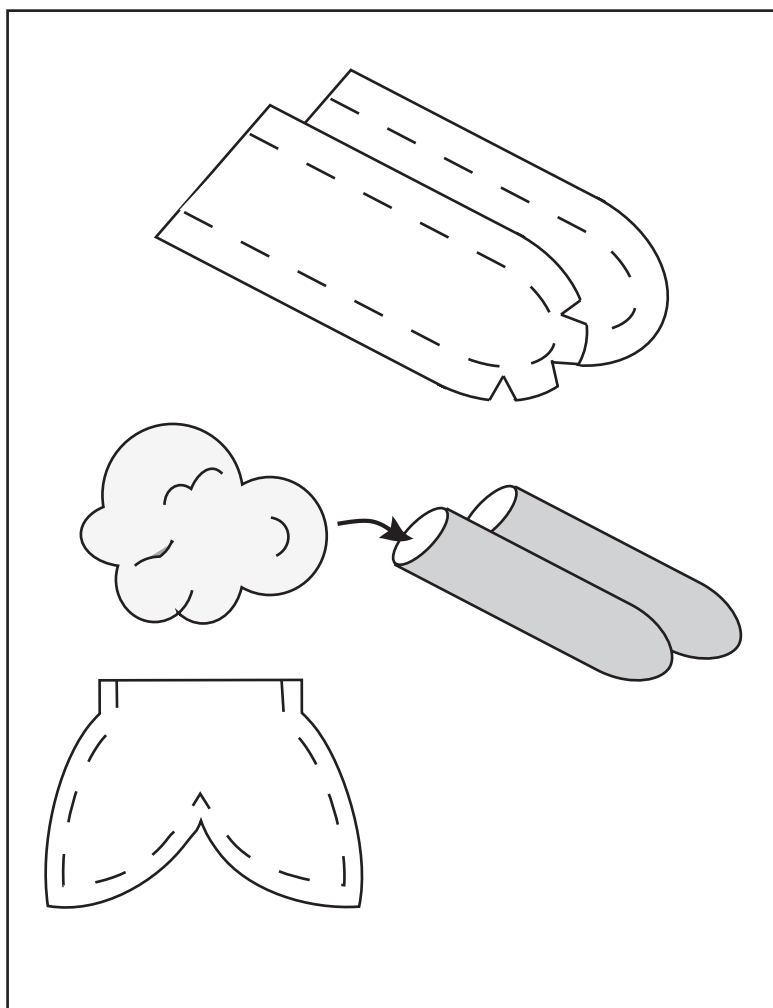
1. Place two arm pieces right sides together. Sew along the outside edge of the arms. Repeat with the remaining two arm pieces.

2. Clip along curves to allow for easy turning.

3. Use a chopstick or knitting needle to turn the arms right side out. Stuff them firmly with polyester fibrefill using a chopstick or knitting needle; use small tufts of stuffing at a time.

4. Sew along the outside edge of the tail fin pieces, right sides together. Leave the top edge open.

5. Turn right side out and press.



F. Assemble Doll

1. Baste the ponytail pieces and arms to the head/body piece.

2. Baste the tail fin piece to the body, then pin the fins inward so they don't get caught in the outside seam.

3. With right sides together, pin the back body piece to the head/body.

4. With right sides together, pin the Hair Back to the head of the doll. The bottom quarter inch of the felt should cover the back body piece pinned to the head/body.

5. Starting at the neck, sew along the bottom edge of the doll. Pivot the presser foot at the other side of the neck, and continue sewing around the head of the doll.

5. Remove the pins. Turn the doll right-side-out through the opening at the back neck/hairline.

6. Stuff firmly with polyester fibrefill.

7. Handstitch the opening along the neck shut using a ladder stitch.

